

*Bringing a New Era of Good Food, Good Wine & Good Times to Brisbane*

**\*\*\*Awarded One Chef's Hat - Brisbane Good Food Guide Awards  
2008/2009\*\*\***

**\*\*\*Awarded a 3 Glass Rating – Australian Wine List of the Year 2008/2009\*\*\***

**\*\*\*National Finalist – Wine List of the Year 2009\*\*\***

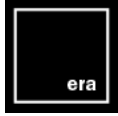
**Voted One of Brisbane's Top Ten Restaurants of 2009 – Gourmet Traveller  
Magazine**



## *Era Wedding Reception Prospectus for 2010*



102 Melbourne St (Cnr Merivale St) South Brisbane Q 4101  
Phone: (07) 3255 2033 Fax: (07) 3255 2833  
Enquiries: [admin@erabistro.com.au](mailto:admin@erabistro.com.au)  
Web: [www.erabistro.com.au](http://www.erabistro.com.au)



*Bringing a New Era of Good Food, Good Wine & Good Times to Brisbane*



#### **About Era.....**

**From the people behind the multi-award winning Circa restaurant, Era is located in the cosmopolitan theatre precinct of South Brisbane!**

**This ultra modern space with a retro chic twist provides the perfect setting for your special day.....with the added bonus of exceptional food and wine, professional, friendly service and over 500 car parks on-site for your guests.**

**At Era, we understand how important it is for a wedding reception to be memorable and reflective of the personal style of the Bride and Groom. One size definitely does not fit all when it comes to receptions and Era offers a range of different venues and wedding packages to suit every style and taste.**

**Read on for more details or simply call Brad or Melinda on (07) 3255 2033 to arrange an appointment to discuss your needs in more detail.**

102 Melbourne St (Cnr Merivale St) South Brisbane Q 4101  
Phone: (07) 3255 2033 Fax: (07) 3255 2833  
Enquiries: [admin@erabistro.com.au](mailto:admin@erabistro.com.au)  
Web: [www.erabistro.com.au](http://www.erabistro.com.au)



*Bringing a New Era of Good Food, Good Wine & Good Times to Brisbane*  
**Venue Options.....**



### **Bistro**

Seating up to 120, era BISTRO is available exclusively for corporate or private functions. Suitable for sit-down or cocktail style events, this super modern venue is sure to leave a lasting impression on your guests.



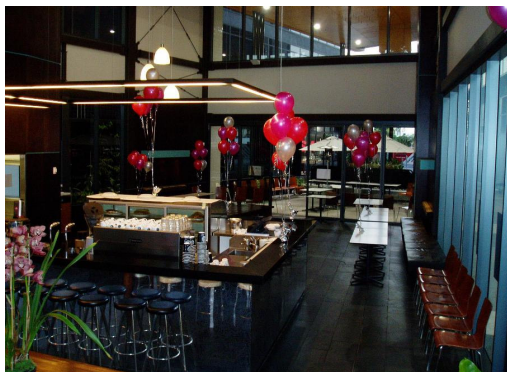
### **Private Dining Room**

The back half of the Bistro, closed off from the rest of the venue by beautiful glass bi-fold doors, forms a Private Dining Room seating up to 50. This self-contained dining venue offers all of the trappings of dining in the Bistro itself with the added advantage of exclusivity of menu and dedicated service.



### **Covered Alfresco Areas**

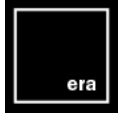
Perfect for pre-dinner drinks or cocktail functions for groups of 20 to 80, era's alfresco areas provide a slightly more casual function venue alternative where guests can still experience the outstanding food and service that era has to offer.



### **'The Pod' at Era**

This stand-alone cocktail function venue, equipped with its own bar and sound system, is a space that you can truly make your own for the evening. Take advantage of the beautiful Queensland weather and open the huge bi-fold doors so that your guests can enjoy themselves both indoors and outdoors. Suitable for cocktail functions for up to 150 guests.

102 Melbourne St (Cnr Merivale St) South Brisbane Q 4101  
Phone: (07) 3255 2033 Fax: (07) 3255 2833  
Enquiries: [admin@erabistro.com.au](mailto:admin@erabistro.com.au)  
Web: [www.erabistro.com.au](http://www.erabistro.com.au)



Bringing a New Era of Good Food, Good Wine & Good Times to Brisbane

### **Set Menus for Seated Wedding Receptions (Bistro & Private Room Only)**

#### **Option 1**

A selection of six different canapés is offered over a one hour period to accompany pre-dinner drinks, followed by two choices of entrée, main course and dessert delivered alternately. Menu includes buttered green vegetables and potato mash with the main meals plus tea and coffee to finish. (Final selections can be made from the current Bistro Menu)

## **\$89 PER PERSON**

#### **SAMPLE MENU**

##### **Canapes**

Smoked Salmon, Blini, Caviar, Crème Fraiche  
Goats Cheese & Pancetta Parcels with Fig  
BBQ Prawns, Olive Oil & Lime  
Thai Chicken Spring Rolls, Green Curry Sauce  
Lamb Tagine Tartlets  
Wagyu Beef & Field Mushroom Skewers

##### **Entrée**

Seared Scallops, Cherry Tomato & Watercress Tartlet, warm Sauce Tartare

Chargrilled Quail, Potato Galette, Swiss Chard, Sour Cherry Jus

##### **Main Course**

Snapper with Potato Scales, Confit Fennel, Croquette, Bouillabaise reduction & Rouille

Black Angus Beef Fillet, wilted Spinach, Truffle Gnocchi, Wagyu Bacon & Red Wine Jus

*Buttered Green Vegetables and Potato Mash*

##### **Dessert**

Chai Crème Brulee with Milk Gelato & Spice Biscuit

Flourless Chocolate Brownie, Pistachio Nougat Glace, Cherries, Persian Fairy Floss

##### ***Meals delivered alternately***

*Grinders Coffee and 'T2' Tea*

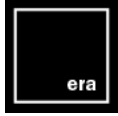
**\*\*\*You may wish to provide your guests with a choice of three entrees, three main courses and three desserts. Add \$15 per person to the above per person price\*\*\***

102 Melbourne St (Cnr Merivale St) South Brisbane Q 4101

Phone: (07) 3255 2033 Fax: (07) 3255 2833

Enquiries: [admin@erabistro.com.au](mailto:admin@erabistro.com.au)

Web: [www.erabistro.com.au](http://www.erabistro.com.au)



Bringing a New Era of Good Food, Good Wine & Good Times to Brisbane

## **Set Menus for Seated Wedding Receptions (Bistro & Private Room Only)**

### **Option 2**

A selection of six different canapés is offered over a one hour period to accompany pre-dinner drinks, followed by two choices of entrée and main course delivered alternately with your wedding cake plated as dessert . Menu includes buttered green vegetables and potato mash with the main meals plus tea and coffee to finish. (Final selections can be made from the current Bistro Menu)

## **\$79 PER PERSON**

### **SAMPLE MENU**

#### **Canapes**

Smoked Salmon, Blini, Caviar, Crème Fraiche  
Goats Cheese & Pancetta Parcels with Fig  
BBQ Prawns, Olive Oil & Lime  
Thai Chicken Spring Rolls, Green Curry Sauce  
Lamb Tagine Tartlets  
Wagyu Beef & Field Mushroom Skewers

#### **Entrée**

Seared Scallops, Cherry Tomato & Watercress Tartlet, warm Sauce Tartare  
Goat Cheese Tortellini's, Beetroot, Almonds, fresh Figs & Sage Beurre Noisette

#### **Main Course**

Panfried John Dory Fillets, Pearl Pasta, Zucchini Flowers, Saffron Cream Sauce  
Black Angus Beef Fillet, wilted Spinach, Truffle Gnocchi, Wagyu Bacon & Red Wine Jus

*Buttered Green Vegetables and Potato Mash*

#### **Dessert**

Wedding Cake served with Vanilla Bean Anglaise and fresh Strawberry Salad

#### ***Meals delivered alternately***

*Grinders Coffee and 'T2' Tea*

**\*\*\*You may wish to provide your guests with a choice of three entrees and three main courses. Add \$10 per person to the above per person price\*\*\***

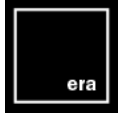
### **Cocktail Receptions**

102 Melbourne St (Cnr Merivale St) South Brisbane Q 4101

Phone: (07) 3255 2033 Fax: (07) 3255 2833

Enquiries: [admin@erabistro.com.au](mailto:admin@erabistro.com.au)

Web: [www.erabistro.com.au](http://www.erabistro.com.au)



*Bringing a New Era of Good Food, Good Wine & Good Times to Brisbane*

Wanting a memorable reception with delicious food, great wine and wonderful atmosphere where your guests can mingle and enjoy the company of everyone in the room?

Then a cocktail reception is the perfect solution!

### **Menu Options.....**

#### **ON ARRIVAL (OPTIONAL)**

You may wish to have some of our Turkish Bread and Dip Stations set up for the arrival of your guests. Each station consists of a platter of Turkish Bread accompanied by three different bowls of house-made dips at a cost of \$30 per station.

#### **CANAPES**

A selection of eight different canapés is offered over a specified period. Your choices can be made from our extensive Canape selection. The Canape prices listed below are per person for the number of hours specified and include GST.

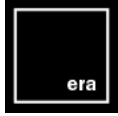
Hours	Price Per Person
2	\$28 (14 to 16 pieces served per person)
3	\$38 (21 to 24 pieces served per person)

#### **FORK DISH (OPTIONAL)**

For a more substantial meal, the Canapes can be teamed with a pair of Fork Dishes (one appetiser sized and one large entrée sized) at a cost of \$34 per person. Our fork dish selection is updated regularly based upon seasonality of produce.

#### **OTHER OPTIONAL EXTRAS**

1. Your wedding cake may also be served for dessert accompanied by house-made icecream, fresh fruit and vanilla bean anglaise at a cost of \$5 per person.
2. The Canapes may also be teamed with some roving dessert platters @\$15 per person. See the attached sample menu for details.
3. Specialty Cheese Platters can also be served at a cost of \$45 per platter.



*Bringing a New Era of Good Food, Good Wine & Good Times to Brisbane*

**COCKTAIL RECEPTION SAMPLE MENU**

**GUEST ARRIVAL** – Turkish Bread & Dips Station (optional)

**CANAPES**

Cured Salmon, Caviar, Blini, Crème Fraiche

Thai Chicken Curry Spring Roll

Caramelised Onion & Goat Cheese Tart

Lamb Tagine Tartlets, Coriander, Yoghurt

**FORK DISH (optional)**

Seared Qld Scallops, Skordalia, crisp Bacon, Asparagus

**CANAPES**

Risotto Balls, Romesca Sauce

BBQ Prawn Cutlets, Olive Oil and Lime

Wagyu Beef & Field Mushroom skewer

Peking Duck Pancake

**FORK DISH (optional)**

Sauteed Moreton Bay Bugs, Lemon Risotto, Bisque Vinaigrette, Herb Salad

**ROVING DESSERT PLATTERS (optional) @ \$15 per person**

Glazed Fruit Tartlets

Chocolate Fudge

Mini Apple Strudels

Vanilla Slices

Mini Lemon Meringue Pies

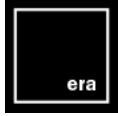
**(Optional) Specialty Cheese Platters with Walnut & Raisin Bread, Lavosh  
and Quince Paste @ \$45 each**

102 Melbourne St (Cnr Merivale St) South Brisbane Q 4101

Phone: (07) 3255 2033 Fax: (07) 3255 2833

Enquiries: [admin@erabistro.com.au](mailto:admin@erabistro.com.au)

Web: [www.erabistro.com.au](http://www.erabistro.com.au)



Bringing a New Era of Good Food, Good Wine & Good Times to Brisbane

## Beverages

When making your beverage selections, you have three options:

**Option 1 – ON CONSUMPTION.** You decide what beverages are available to your guests and finalise the account at the completion of the reception.

**Option 2 – BAR TAB.** You decide what beverages are available to your guests and set a fixed amount, ie \$1500.

**Option 3 – BEVERAGE PACKAGE.** You may wish to choose from one of our packages. The prices listed below are per person for the number of hours specified.

Hours	Package A	Package B	Package C
2	\$26	\$36	\$48
3	\$36	\$48	\$60
4	\$44	\$56	\$80
5	\$50	\$65	\$90

**Package A** – Choice of one sparkling, one white wine and one red wine **from the selection listed below** plus Hahn Super Dry, Hahn Premium Light and soft drink.

### **Current Package A Wine Selection**

Sparkling – Select one of the following:

Sparkling Choice #1 - Vina Undarraga Brut N/V, Chile

Sparkling Choice #2 – Tyrrells Pinot Chardonnay Vintage Brut, Hunter Valley NSW

Sparkling Choice #3 - Paul Louis Blanc de Blanc, France

White – Select one of the following:

White Choice #1 – Totara Sauvignon Blanc 2008, Marlborough NZ

White Choice #2 – Round 2 Chardonnay 2009, Barossa Valley SA

White Choice #3– Witches Falls Verdelho 2008, Granite Belt QLD

Red – Select one of the following:

Red Choice #1 – Smith & Hooper Cabernet Merlot 2006, Wrattobully SA

Red Choice #2 – St Hallet Gamekeepers Shiraz Cabernet 2008, Barossa Valley SA

Red Choice #3 – Round 2 Shiraz 2008, Barossa Valley SA

N.B This selection may vary slightly from what is available on the date of your function based upon availability.

**Package B** – Choice of one sparkling, two white wines and two red wines **from our wine list in the range of \$46-55 per bottle**, Hahn Super Dry, Hahn Premium Light and soft drink.

**Package C** – Choice of one sparkling, two white wines and two red wines **from our wine list in the range of \$56-70 per bottle**, open draught beer selection and soft drink.

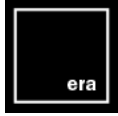
**\*\*\*Premium Beer Package Upgrade including Crown Lager and Cascade Premium Light is available. Simply add \$3.00 per person to your chosen package price\*\*\***

102 Melbourne St (Cnr Merivale St) South Brisbane Q 4101

Phone: (07) 3255 2033 Fax: (07) 3255 2833

Enquiries: [admin@erabistro.com.au](mailto:admin@erabistro.com.au)

Web: [www.erabistro.com.au](http://www.erabistro.com.au)



*Bringing a New Era of Good Food, Good Wine & Good Times to Brisbane*

### Minimum Spend Details

#### Private Dining Room

The minimum spend for exclusive use of the Private Dining Room for your reception is as follows:

- Friday/Saturday - \$3500 (food and beverage inclusive)
- Sunday - \$2500 (food and beverage inclusive)

**\*\*\*The above pricing applies to all receptions booked from January to October 2010. For minimum spend pricing details for November/December 2010, please call either Melinda or Brad at Era on (07) 3255 2033\*\*\***

#### The Pod@era – Stand Alone Cocktail Functions Venue

The minimum spend for exclusive use of The Pod@era for evening cocktail receptions is \$2500.

#### Bistro

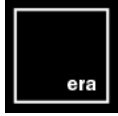
The minimum spend for exclusive use of the entire Bistro dining space (including lounge and corner alfresco area) is as follows:

- Friday/Saturday - \$11000 (food and beverage inclusive)
- Sunday – \$6000 (food and beverage inclusive)

**\*\*\*The above pricing applies to all functions booked from January to October 2010. For minimum spend pricing details for November/December 2010, please call either Melinda or Brad at Era on (07) 3255 2033\*\*\***

#### Covered Alfresco Areas

No minimum spend applies for these areas.



*Bringing a New Era of Good Food, Good Wine & Good Times to Brisbane*

### **Additional Information**

#### **Recommendations**

Entertainment - Performers may be sourced through Amanda Wecker at the Queensland Conservatorium of Music Performers Agency on (07) 3875 6111.  
Flowers – We highly recommend Sandee Newton from Always Fabulous Flowers on (07) 3341 9825.  
Photography – We recommend the brilliant work of Christopher Thomas Photography. Phone 0407 377 787 or visit [www.christopherthomas.com.au](http://www.christopherthomas.com.au).

#### **Parking**

Over 500 complimentary on-site car parks are available for your guests.

#### **Disabled Access**

Era has wheelchair access from the underground car park via a lift. A disabled toilet is located near the bar area of the Bistro.

#### **Special Meals**

We are happy to organise a special meal for vegetarian guests or those with special dietary requirements. Please mention this to the event organiser at least one week prior to your reception.

#### **Children's Meals**

Children's meals, including crumbed fish or chicken and chips, ice cream and a soft drink are priced at \$25 per child.

#### **Microphone and Dance Floor**

A microphone can be provided for your speeches at a cost of \$69 incl. GST. A dance floor measuring 6.5m x 2.5m can be sourced at a cost of \$380 incl. GST. These items can simply be added to your final bill at the conclusion of your reception.

#### **Booking Deposit**

To secure your wedding reception with us here at Era, a deposit of \$1000 is required within 7 days of making your booking. This amount will be deducted from your final bill at the conclusion of your reception.

#### **Pricing Validity**

The pricing contained in this prospectus is current for the duration of 2010. Menu items available for your reception may change due to seasonality of produce and associated menu changes throughout the year.

102 Melbourne St (Cnr Merivale St) South Brisbane Q 4101  
Phone: (07) 3255 2033 Fax: (07) 3255 2833  
Enquiries: [admin@erabistro.com.au](mailto:admin@erabistro.com.au)  
Web: [www.erabistro.com.au](http://www.erabistro.com.au)